

Screw conveyor to feed your material!

IBC designs systems with different types of screw conveyors. Depending on the application, the conveyors are manufactured both as troughs with a lid and as tube conveyors.

Axle-mounted screws

The axle-mounted spiral has the benefit of not running against the trough when there is little or no material to transport in the screw conveyor.

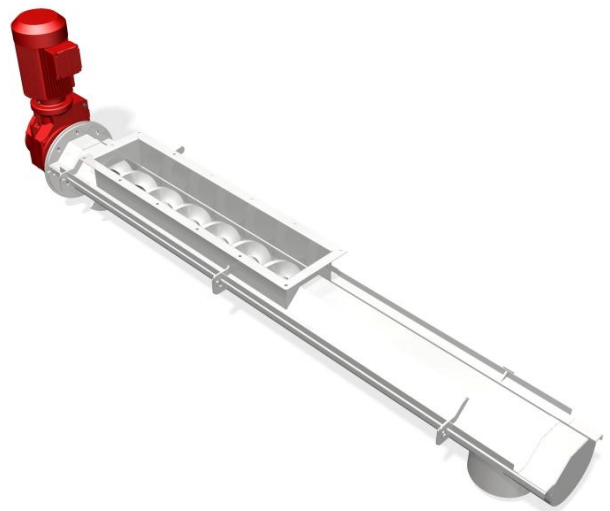
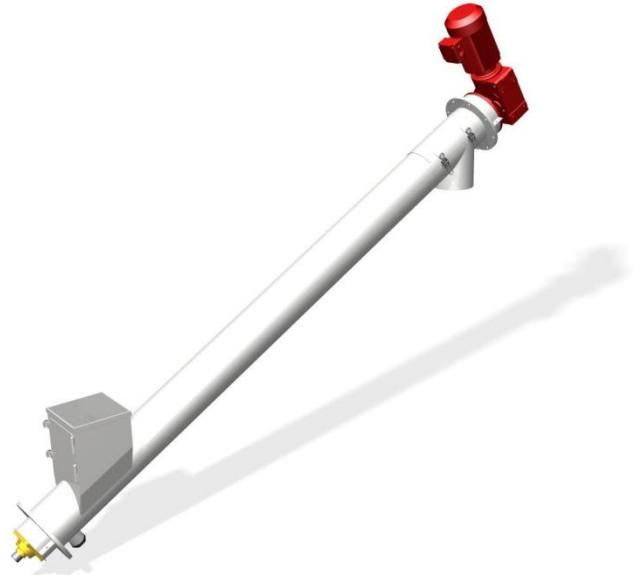
Axle-free screws

A key advantage of the axle-free spiral is its ability to transport sticky, filamentous and irregular materials without seizing or becoming blocked. The spiral has a high transportation capacity and the large volume of the spiral enables it to handle larger pieces.

General

A screw conveyor can be designed in several different ways. Here are a few examples:

- Few moving parts, resulting in a reliable conveyor with minimal needs for service and maintenance.
- Inspection hatches - one or more hatches along the tube length.
- Different degrees of slope, from 0° - 90° (horizontal to vertical).
- Inlet and outlet is available in standard and custom-made designs.
- Pushing or pulling operation.
- Offshore version.
- The motor can be equipped with frequency converter or rotation guard.
- Tube or trough screw.
- Wear-and-tear inserts of plastic material, sheet metal or flat bars.
- Material quality: standard steel, stainless steel, acid-proof steel.
- Surface treatment: pickling, polishing, etc.
- ATEX classification, food grade, etc.



IBC International Handling AB

Hamnvägen 1
S-311 32 Falkenberg, Sweden
Phone +46-346 569 10

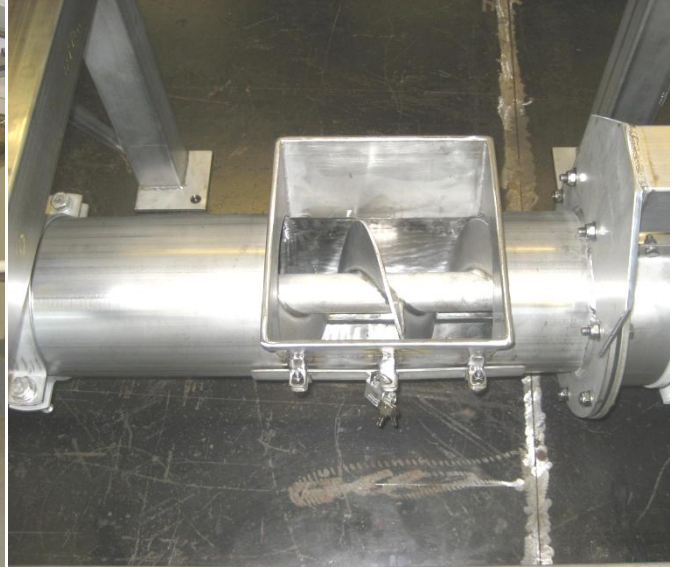
Fax
E-mail
Home page

+46-346 569 18
sales@ibc-international.se
www.ibc-international.se

Applications



Horizontal trough screw with twin inlets. A flexible screw conveyor is connected to the outlet.



Detailed view – stainless steel spiral.

IBC International Handling AB

Hamnvägen 1
S-311 32 Falkenberg, Sweden
Phone +46-346 569 10

Fax
E-mail
Home page

+46-346 569 18
sales@ibc-international.se
www.ibc-international.se