



POWDER HANDLING  
LIFTING EQUIPMENT

*PD LIFTTEC*  
Vacuum - Automation

PD GRIPPER®





| Technical data for PDG500 |                                |
|---------------------------|--------------------------------|
| Dimension                 | 200x250x105 mm                 |
| Weight                    | 2.2 kg                         |
| Air consumption           | 200 NI/min                     |
| Connection                | 1/8", Ø8 mm                    |
| Mounting                  | 4 x M8, profile 90x45 (CC45)   |
| Material                  | aluminum, rubber, polyurethane |






Order information

|      | Description  | Order code                     |
|------|--|--------------------------------|
|      | Vacuum box<br>Mounting profile<br>Screws<br>Fittings<br>Silencer<br>Flow plate<br>COAX midi  | PDG500                         |
| Flow | Low flow<br>Medium flow<br>High flow   | LF<br>MF<br>HF                 |
|      | Artno: 39PDG500CR01<br>Hole Ø8<br>Cellular rubber t=15 mm<br>Cellular rubber t=6 mm<br><br>Artno: 39PDG500CR02<br>Hole Ø12<br>Cellular rubber t=15 mm<br>Cellular rubber t=6 mm<br><br>Artno: 39PDG500CRF1<br>Hole Ø8<br>Cellular rubber t=3 mm<br>Filter<br>Cellular rubber t=15 mm<br>Cellular rubber t=6 mm<br><br>Artno: 39PDG500CRF2<br>Hole Ø12<br>Cellular rubber t=3 mm<br>Filter<br>Cellular rubber t=15 mm<br>Cellular rubber t=6 mm | 1<br><br>2<br><br>F1<br><br>F2 |

Example: PDG500-MF-1



Order information

|  | Description   | Order code                     |
|--|---|--------------------------------|
| Type of unit   |   | PDG500                         |
|    | Two units<br>Three units<br>Four units<br>Five units<br>Six units   | R2<br>R3<br>R4<br>R5<br>R6     |
| Flow   | Low flow<br>Medium flow<br>High flow  | LF<br>MF<br>HF                 |
| <br><br><br> | Artno: 39PDG500XCR01<br>Hole Ø8<br>Cellular rubber t=15 mm<br>Cellular rubber t=6 mm<br><br>Artno: 39PDG500XCR02<br>Hole Ø12<br>Cellular rubber t=15 mm<br>Cellular rubber t=6 mm<br><br>Artno: 39PDG500XCRF1<br>Hole Ø8<br>Cellular rubber t=3 mm<br>Filter<br>Cellular rubber t=15 mm<br>Cellular rubber t=6 mm<br><br>Artno: 39PDG500XCRF2<br>Hole Ø12<br>Cellular rubber t=3 mm<br>Filter<br>Cellular rubber t=15 mm<br>Cellular rubber t=6 mm<br><br>X = Number of units | 1<br><br>2<br><br>F1<br><br>F2 |

Example: PDG500-R2-MF-1



| Technical data for PDG456 |                                |
|---------------------------|--------------------------------|
| Dimension                 | 380x120x105 mm                 |
| Weight                    | 2.2 kg                         |
| Air consumption           | 200 NI/min                     |
| Connection                | 1/8", Ø8 mm                    |
| Mounting                  | 4 x M8, profile 90x45 (CC45)   |
| Material                  | aluminum, rubber, polyurethane |



Order information

|      | Description  | Order code     |
|------|--|----------------|
|      | Vacuum box<br>Mounting profile<br>Screws<br>Fittings<br>Silencer<br>Flow plate<br>COAX midi                              | PDG456         |
| Flow | Low flow<br>Medium flow<br>High flow   | LF<br>MF<br>HF |
|      | Artno: 39PDG456CR01<br>Hole Ø8<br>Cellular rubber t=15 mm<br>Cellular rubber t=6 mm                                      | 1              |
|      | Artno: 39PDG456CR02<br>Hole Ø12<br>Cellular rubber t=15 mm<br>Cellular rubber t=6 mm                                     | 2              |
|      | Artno: 39PDG456CRF1<br>Hole Ø8<br>Cellular rubber t=3 mm<br>Filter<br>Cellular rubber t=15 mm<br>Cellular rubber t=6 mm  | F1             |
|      | Artno: 39PDG456CRF2<br>Hole Ø12<br>Cellular rubber t=3 mm<br>Filter<br>Cellular rubber t=15 mm<br>Cellular rubber t=6 mm | F2             |

Example: PDG456-MF-1



Order information

|   | Description   | Order code                     |
|---|---|--------------------------------|
| Type of unit  |   | PDG456                         |
|   | Two units<br>Three units<br>Four units<br>Five units<br>Six units   | R2<br>R3<br>R4<br>R5<br>R6     |
| Flow  | Low flow<br>Medium flow<br>High flow  | LF<br>MF<br>HF                 |
|  | Artno: 39PDG456XCR01<br>Hole Ø8<br>Cellular rubber t=15 mm<br>Cellular rubber t=6 mm<br><br>Artno: 39PDG456XCR02<br>Hole Ø12<br>Cellular rubber t=15 mm<br>Cellular rubber t=6 mm<br><br>Artno: 39PDG456XCRF1<br>Hole Ø8<br>Cellular rubber t=3 mm<br>Filter<br>Cellular rubber t=15 mm<br>Cellular rubber t=6 mm<br><br>Artno: 39PDG456XCRF2<br>Hole Ø12<br>Cellular rubber t=3 mm<br>Filter<br>Cellular rubber t=15 mm<br>Cellular rubber t=6 mm<br><br>X = Number of units | 1<br><br>2<br><br>F1<br><br>F2 |




Example: PDG456-R2-MF-1

**PDG60 Aluline**  
CC12.5 mm



| Technical data for PDG60 Alu (CC12.5) |                       |
|---------------------------------------|-----------------------|
| Dimension                             | 60x115 mm             |
| Weight                                | 2 kg/m (excl. pump)   |
| Air consumption                       | 100 NI/min            |
| Connection                            | 1/8", Ø8 mm           |
| Mounting                              | 4 x M6, profile 60x30 |
| Material                              | aluminum, rubber, pom |

**Order information**

|   | Description   | Order code     |
|---|---|----------------|
|    | Vacuum pump<br>Vacuum profile 60x30<br>Screws<br>Fittings<br>Silencer<br>COAX midi                                      | PDG60          |
| Hole distance   | CC12.5 mm   | 12.5           |
| Flow  | Low flow<br>Medium flow<br>High flow  | LF<br>MF<br>HF |
|  | Artno: 39PDG60CR01<br>Hole Ø10<br>Cellular rubber t=15 mm<br>Cellular rubber t=6 mm                                     | 1              |
|  | Artno: 39PDG60CRF1<br>Hole Ø10<br>Cellular rubber t=3 mm<br>Filter<br>Cellular rubber t=15 mm<br>Cellular rubber t=6 mm | F1             |
| Length  | Variable length (mm)  | 0-4000         |

Example: PDG60-12.5-MF-1-800



|                 | Technical data for PDG80 Alu (CC15) |
|-----------------|-------------------------------------|
| Dimension       | 80x104 mm                           |
| Weight          | 2.5 kg/m (excl. pump)               |
| Air consumption | 100-300 NI/min                      |
| Connection      | 1/2", Ø8 mm                         |
| Mounting        | 4 x M8, profile 80x40               |
| Material        | aluminum, rubber, pom               |

### Order information

|   | Description   | Order code     |
|---|---|----------------|
|    | Vacuum pump<br>Vacuum profile 80x40<br>Screws<br>Fittings<br>Silencer<br>COAX midi  | PDG80          |
| Hole distance   | CC15 mm   | 15             |
| Flow  | Low flow<br>Medium flow<br>High flow  | LF<br>MF<br>HF |
|  | Artno: 39PDG8015CR01<br>Hole Ø10, "PISA" pattern<br>Cellular rubber t=15 mm<br>Cellular rubber t=6 mm                                     | 1              |
|  | Artno: 39PDG8015CR02<br>Hole Ø10<br>Cellular rubber t=15 mm<br>Cellular rubber t=6 mm   | 2              |
|  | Artno: 39PDG8015CRF1<br>Hole Ø10, "PISA" pattern<br>Cellular rubber t=3 mm<br>Filter<br>Cellular rubber t=15 mm<br>Cellular rubber t=6 mm | F1             |
|  | Artno: 39PDG8015CRF2<br>Hole Ø10<br>Cellular rubber t=3 mm<br>Filter<br>Cellular rubber t=15 mm<br>Cellular rubber t=6 mm                 | F2             |
| Length  | Variable length (mm)  | 0-6000         |

Example: PDG80-15-MF-1-800

**PDG80 Aluline**  
CC20 mm



| Technical data for PDG80 Alu (CC20) |                       |
|-------------------------------------|-----------------------|
| Dimension                           | 80x104 mm             |
| Weight                              | 2.5 kg/m (excl. pump) |
| Air consumption                     | 100-300 NI/min        |
| Connection                          | 1/2", Ø8 mm           |
| Mounting                            | 4 x M8, profile 80x40 |
| Material                            | aluminum, rubber, pom |

**Order information**

|               | Description   | Order code     |
|---------------|---|----------------|
|               | Vacuum pump<br>Vacuum profile 80x40<br>Screws<br>Fittings<br>Silencer<br>COAX midi  | PDG80          |
| Hole distance | CC20 mm   | 20             |
| Flow          | Low flow<br>Medium flow<br>High flow  | LF<br>MF<br>HF |
|               | Artno: 39PDG8020CR01<br>Hole Ø12, "PISA" pattern<br>Cellular rubber t=15 mm<br>Cellular rubber t=6 mm                                     | 1              |
|               | Artno: 39PDG8020CR02<br>Hole Ø12<br>Cellular rubber t=15 mm<br>Cellular rubber t=6 mm   | 2              |
|               | Artno: 39PDG8020CRF1<br>Hole Ø12, "PISA" pattern<br>Cellular rubber t=3 mm<br>Filter<br>Cellular rubber t=15 mm<br>Cellular rubber t=6 mm | F1             |
|               | Artno: 39PDG8020CRF2<br>Hole Ø12<br>Cellular rubber t=3 mm<br>Filter<br>Cellular rubber t=15 mm<br>Cellular rubber t=6 mm                 | F2             |
| Length        | Variable length (mm)  | 0-6000         |



Example: PDG80-20-MF-1-800





| Technical data for PDG160 Alu (CC12.5) |                               |
|--|-------------------------------|
| Dimension                              | 160x109 mm                    |
| Weight                                 | 6.0 kg/m (excl. pump)         |
| Air consumption                        | 200-600 NI/min                |
| Connection                             | 2 x 1/2", Ø8 mm               |
| Mounting                               | 4 x M8, profile 160x40 (CC40) |
| Material                               | aluminum, rubber, pom         |

### Order information

|   | Description  | Order code     |
|---|--|----------------|
|    | Vacuum pump<br>Vacuum profile 160x40<br>Screws<br>Fittings<br>Silencer<br>COAX midi  | PDG160         |
| Hole distance   | CC12.5 mm  | 12.5           |
| Flow  | Low flow<br>Medium flow<br>High flow   | LF<br>MF<br>HF |
|  | Artno: 39PDG160CR01<br>Hole Ø12<br>Cellular rubber t=15 mm<br>Cellular rubber t=6 mm<br><br>Artno: 39PDG160CRF1<br>Hole Ø12<br>Cellular rubber t=3 mm<br>Filter<br>Cellular rubber t=15 mm<br>Cellular rubber t=6 mm | 1<br><br>F1    |
| Length  | Variable length (mm)   | 0-4000         |

Example: PDG160-12.5-MF-1-800

## Accessories



Vacuum gauge/  
Manometer



Blow-off valve



Vacuum switches



P6010 AVM



Level compensator  
stroke 30 mm  
on flange



Level compensators



Valves



Vacuum fan



PCC solution



AVM solution



Bracket 80x40/80x80



Bracket 80x40



Angled exhaust



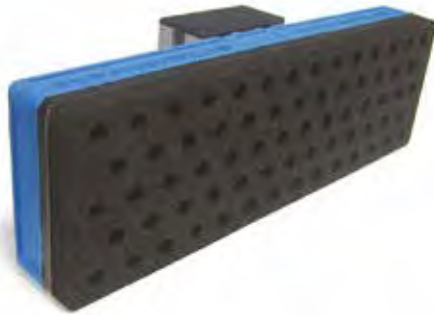
Vacuum flange for  
PDG80/160



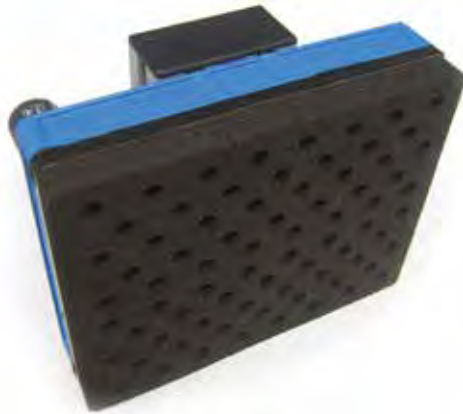
Air connector

| Name               | Description  | Order code  |
|--------------------|--|---|
| Vacuum gauge       | Measure the vacuum level   | 3101602   |
| Manometer          | Measure the pressure   | 3101603   |
| Blow-off valve     | For faster release   | 3900001S330   |
| Vacuum switches    | Pre-set for 30-kPa<br>Adjustable, with one output<br>Adjustable with display   | 0110245<br>0107731<br>0107732   |
| P6010 AVM          | Energy saving function   | 39P6010AVM  |
| Angled exhaust     | For silencer 3/4"  | 3900003/042   |
| Level compensators | Stroke 100 mm (M8)<br>Stroke 65 mm (M8)<br>Stroke 38 mm (M6)<br>Stroke 30 mm (on flange)<br>Stroke 140 mm (without spring) | 3900008S060<br>3900008S075<br>3900008S056<br>0111552 + 3900001/295<br>3900008S065 |
| Brackets           | 80x40/80x40<br>80x40/80x80   | 3900001/380<br>3900001/397  |
| PCC solution       | 6 nozzles  | 3900000S012   |
| AVM solution       | 4 nozzles  | 3900000S011E  |
| Valves             | Camozzi, Parker  |   |
| Vacuum flange      | For external vacuum, Ø32 tube  | 3900001/289   |
| Vacuum fan         | For external vacuum  |   |
| Air connector      | For air connection 1/4"  | 3900001S224   |

PDG456



PDG500



PDG60



PDG80



PDG160





**IBC**  
POWDER HANDLING  
LIFTING EQUIPMENT

**PD LIFTTEC**  
Vacuum - Automation

**IBC International Handling AB**

Hamnvägen 1

S-311 32 Falkenberg

Phone +46 (0)346 - 569 10

Fax

+46 (0)346 - 569 18

E-mail

sales@ibc-international.se

Website

www.ibc-international.se