

Big bag discharger for dust-free emptying of bags using a discharge spout.

IBC's discharge system for big bags is available in several basic versions with a wide range of accessories, to make it adaptable for all customer needs. All machine systems are designed with high quality and accessibility. IBC has extensive experience in handling bulk products and offers custom-tailored bulk handling equipment after dischargers for transport, dosing, sieving and mixing of different types of products.

BENEFITS

- Excellent work environment where the operator is not exposed to dust, thanks to a fully sealed system. Possible applications include foodstuff, pharmaceuticals and others where completely dust-free discharge is required, e.g. when handling toxic substances.
- Prevents contamination of the material.
- Discharges the entire bag contents by spout stretching, bag vibration and/or bag pushers.



BAGBOY HYGIENE type A

Floor stand (10a) with bag support (4b) and centering arms (1a). Clamping device (21) for fixing and stretching the discharge spout, controlled from a pneumatic control cabinet (20).



BAGBOY HYGIENE type B

Floor stand (10b) with bag support (4b), bag suspension stand (1b) and yoke for a fork lift or crane (18c). Clamping device (21) for fixing and stretching the discharge spout, controlled from a pneumatic control cabinet (20).



BAGBOY HYGIENE type C

Crane stand (10c) with bag support (4b), electrically powered chain trolley (17) and lifting yoke (18a). Clamping device (21) for fixing and stretching the discharge spout, controlled from a pneumatic control cabinet (20).

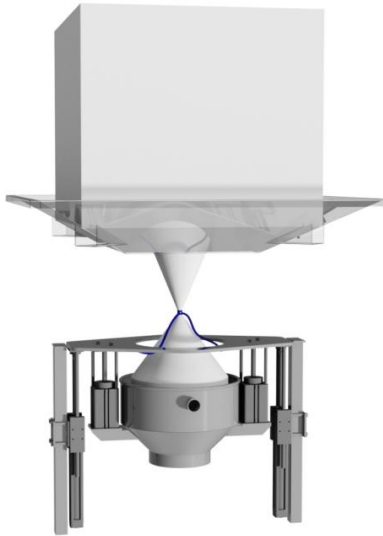
IBC International Handling AB

Hamnvägen 1
 S-311 32 Falkenberg, Sweden
 Phone +46-346 569 10

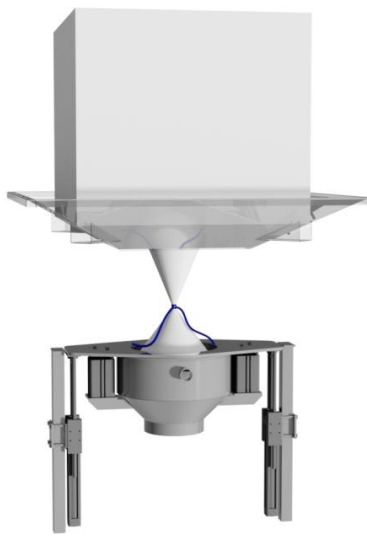
Fax
 E-mail
 Home page

+46-346 569 18
 sales@ibc-international.se
 www.ibc-international.se

Rigging of the discharge spout with the pneumatic clamping device



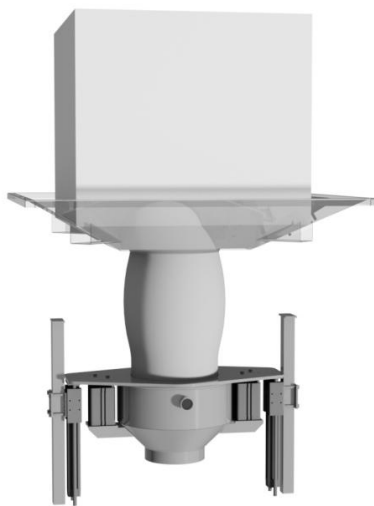
The bag discharge spout is passed through the upper clamping device and over the inner clamping device.



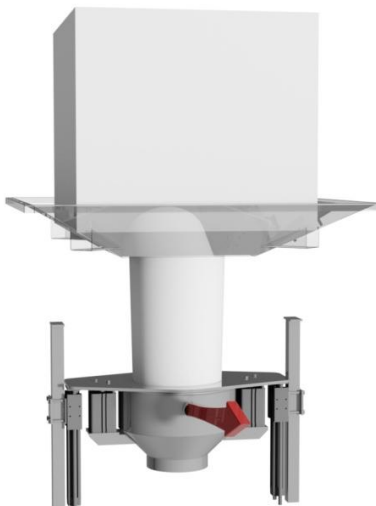
Using a two-hand grip, the inner cylinders are activated and the discharge spout is clamped.



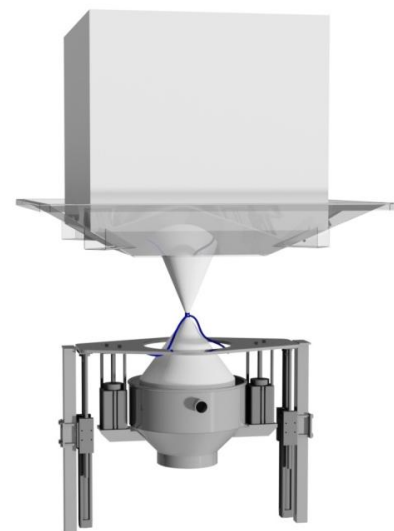
Bag stretching is activated.



The bag spout is untied and dust-free emptying of the bag is initiated.

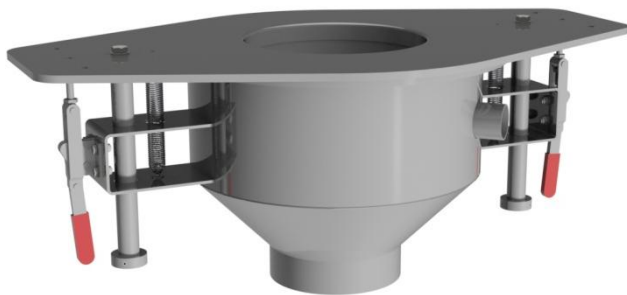


By evacuating the air using the fan system, a negative pressure is created after emptying whereby the bag spout is closed and the bag can be removed without any risk of the powder being released into the premises.



The bag is then tied, and the clamp pistons are released before the bag is removed.

Manual clamping device



The manual clamping device is an option for Bagboy Hygiene. It features a closed discharge system to minimize dust build-up.

The difference between the manual and pneumatic clamping device is that the pneumatic version offers automatic bag stretching, while with the manual version the telfer must be raised if the bag needs to be stretched.

Pneumatic clamping device



Pneumatic clamping device for discharge spout with automatic bag stretching.

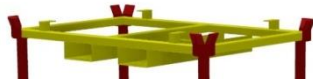
Both clamping units can be equipped with a filter or connected to a central extraction system, supplemented by cleaning nozzles and an extra vibrator for easier cleaning. The clamping device is removable for cleaning.



Examples of accessories for BAGBOY HYGIENE



Iris valve (23) placed under the bag support (4b). Used to easily cut the flow and enables re-closing of the bag.



Fork lift yoke (18c) can be supplied with a bag stretching function, a feature that should ideally be combined with the manual clamping device.



Pneumatic vibrator (6a) ensures a steady product flow. Should be combined with a vibration damper (7) between the bag support and stand.



Electric vibrator (6b) ensures a steady product flow. Should be combined with a vibration damper (7) between the bag support and stand.



IBC standard bag yoke (18a).



IBC low-profile bag yoke (18b). Includes a counter-weight and offers 150 mm negative lift height.



Butterfly valve, sliding valve or rotary valve (8) for controlling the product flow and partial discharge to downstream unit.



Pneumatic pushers (25) facilitate discharge of material from big bag. Mounted on the stand. Adjustable laterally and vertically.

Examples of equipment that IBC offers for all discharge systems

• Screw conveyor • Vacuum conveyor • Pressure conveyor • Vibration feeder • Filters • Rotary valve



BAGBOY Hygiene type B with a rotary valve and blow conveyor.



BAGBOY Hygiene type B with a dosage screw conveyor.



BAGBOY Hygiene type C with a flexible screw conveyor.



BAGBOY Hygiene type B with a vacuum conveyor.



BAGBOY Hygiene type C with a vibration feeder.

IBC International Handling AB

Hamnvägen 1
S-311 32 Falkenberg, Sweden
Phone +46-346 569 10

Fax
E-mail
Home page

+46-346 569 18
sales@ibc-international.se
www.ibc-international.se